

VCU Palliative Care ECHO*

August 22, 2019

CBD: What You Need to Know

Continuing Medical Education

August 22, 2019 | 12:00 PM | teleECHO Conference

Physicians: VCU Health Continuing Medical Education is accredited by the Accreditation Council for Continuing Medical Education to provide continuing medical education for physicians. VCU Health Continuing Medical Education designates this live activity for a maximum of 1 **AMA PRA Category 1 Credits[™]**.

Physicians should claim only the credit commensurate with the extent of their participation in the activity.

Continuing Nursing Education: 1.5 CE Contact Hours

VCUHealth is approved as a provider of continuing nursing education by the Virginia Nurses Association, an accredited approver by the American Nurses Credentialing Center's Commission on Accreditation.

Disclosures

August 22, 2019 | 12:00 PM | teleECHO Conference

In compliance with the Accreditation Council for Continuing Medical Education (ACCME) *Standards for Commercial Support of CME*, VCU Health Continuing Medical Education discloses all relevant relationships which program faculty and planners report having with “any entity producing, marketing, re-selling, or distributing health care goods or services consumed by, or used on, patients.” VCU Health Continuing Medical Education has procedures to resolve any apparent conflicts of interest.

The following Planning Committee and Presenting Faculty Members report relevant financial relationships to disclose:

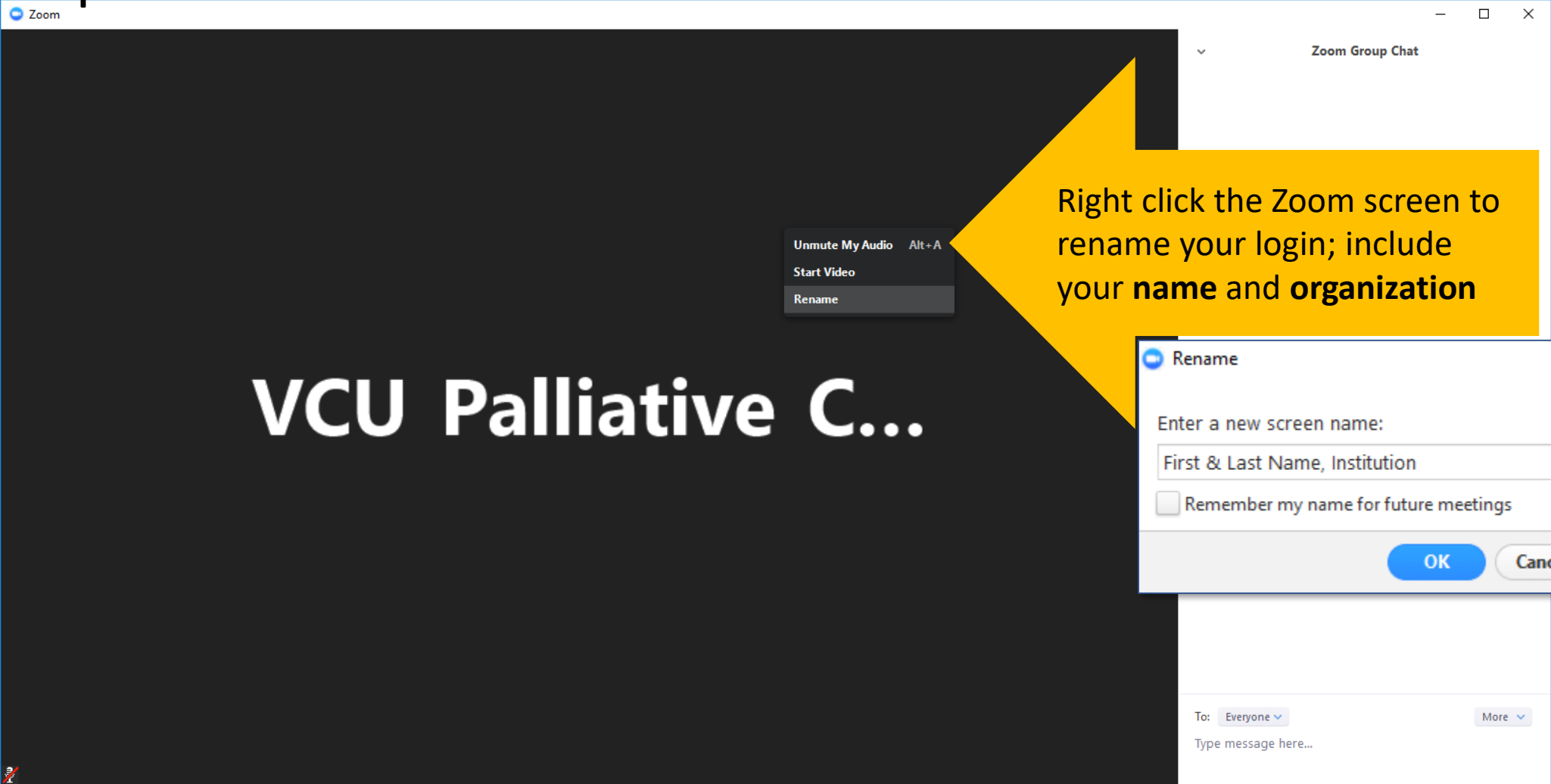
Aron Lichtman, PhD

The following Planning Committee and Presenting Faculty Members report having no relevant financial relationships:

Egidio Del Fabbro, MD; Danielle Noreika, MD

No commercial or in-kind support was provided for this activity

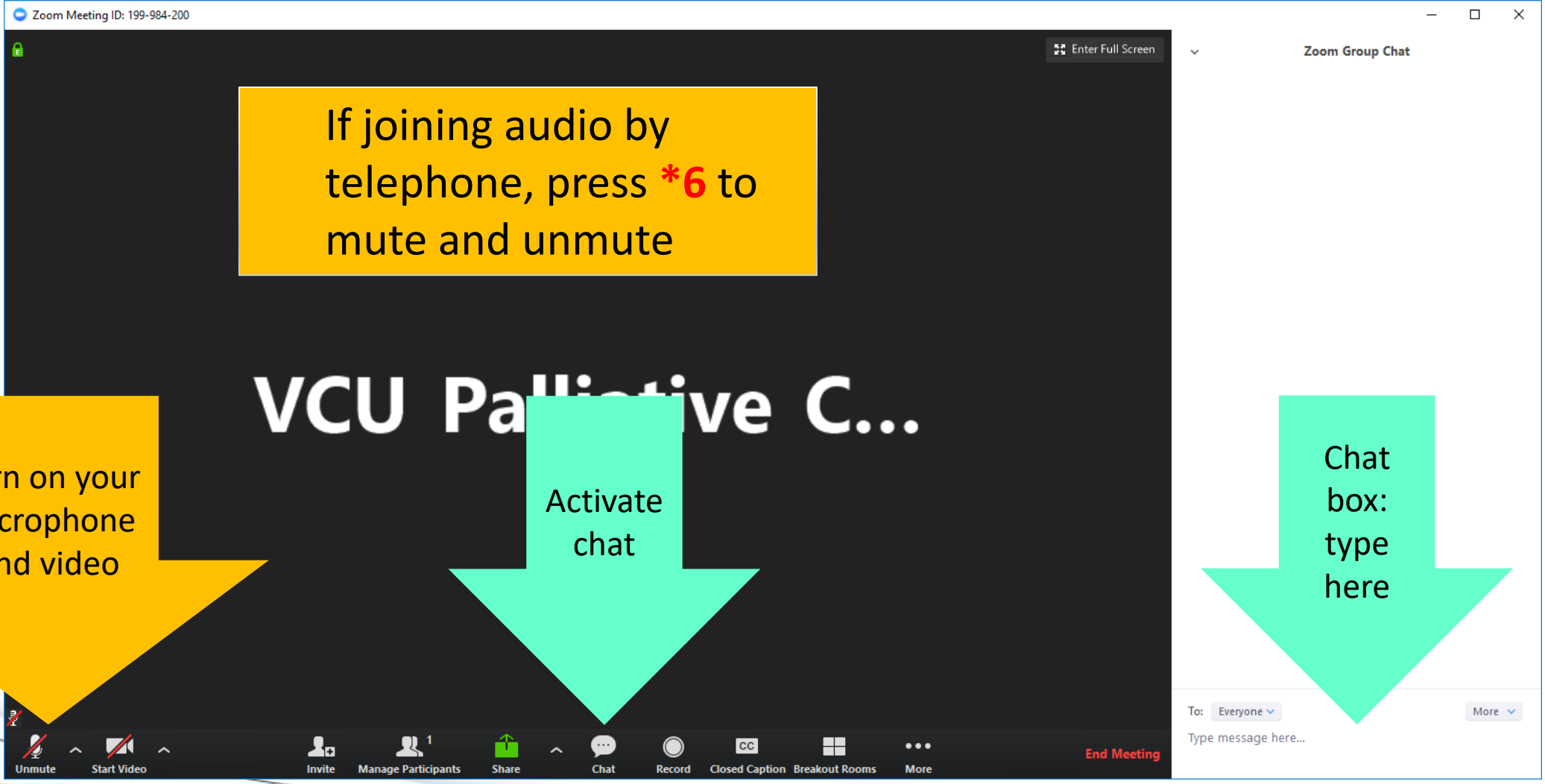
Helpful Reminders



The screenshot shows a Zoom window with a dark background. A right-click context menu is open, showing options: 'Unmute My Audio Alt+A', 'Start Video', and 'Rename'. A yellow arrow points from the text 'Right click the Zoom screen to rename your login; include your **name** and **organization**' to the 'Rename' option. Below the menu, a 'Rename' dialog box is open, containing the text 'Enter a new screen name:', a text input field with the placeholder 'First & Last Name, Institution', a checkbox for 'Remember my name for future meetings', and 'OK' and 'Cancel' buttons. The Zoom window title bar shows 'Zoom' and 'Zoom Group Chat'. The chat area at the bottom shows 'To: Everyone' and a text input field 'Type message here...'.

VCU Palliative C...

Helpful Reminders



Zoom Meeting ID: 199-984-200

Enter Full Screen

Zoom Group Chat

If joining audio by telephone, press *6 to mute and unmute

VCU Palliative C...

Turn on your microphone and video

Activate chat

Chat box: type here

To: Everyone

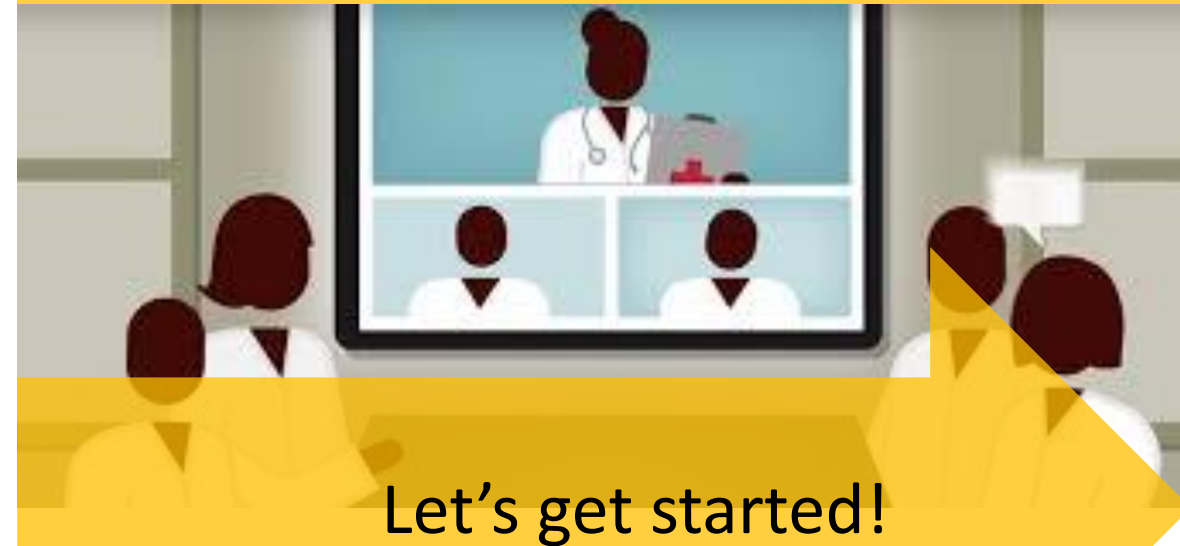
Type message here...

Unmute Start Video Invite Manage Participants Share Chat Record Closed Caption Breakout Rooms More End Meeting

What to Expect

- I. Didactic Presentation
20 minutes + Q&A
- II. Case Discussions
 - Case Presentation
5 min.
 - Clarifying questions from spokes,
then hub
2 min. each
 - Recommendations from spokes,
then hub
2 min. each
 - Summary (hub)
5 min.
- III. Closing and Questions

- Bi-weekly tele-ECHO sessions (1.5 hours)
- Didactic presentations developed by inter-professional experts in palliative care
- Website: www.vcuhealth.org/pcecho
- Email: pcecho@vcuhealth.org



Hub Introductions

VCU Team	
Clinical Directors	<p>Egidio Del Fabbro, MD VCU Palliative Care Chair and Program Director</p> <p>Danielle Noreika, MD, FACP, FAAHPM Medical Director/Fellowship Director VCU Palliative Care</p>
Clinical Experts	<p>Candace Blades, JD, RN – Advance Care Planning Coordinator</p> <p>Brian Cassel, PhD – Palliative Care Outcomes Researcher</p> <p>Jason Callahan, MDiv – Palliative Care Specialty Certified</p> <p>Felicia Hope Coley, RN</p> <p>Diane Kane, LCSW – Palliative Care Specialty Certified</p> <p>Tamara Orr, PhD, LCP – Clinical Psychologist</p>
Support Staff	
<p>Program Manager</p> <p>Telemedicine Practice Administrator</p> <p>IT Support</p>	<p>Teri Dulong-Rae & Bhakti Dave, MPH</p> <p>David Collins, MHA</p> <p>Frank Green</p>

Spoke Participant Introductions

Name and Institution

DISCLAIMER: The federal Controlled Substances Act makes it a crime to lease, rent or maintain a place for the purpose of manufacturing, distributing or using marijuana (21 U.S.C. § 856), to engage in financial transactions to promote illegal activities (21 U.S.C. § 1957), and to conspire to commit such a crime (21 U.S.C. § 846). There is a narrow research exception that permits researchers to grow and study Schedule I drugs, such as marijuana, if the research is registered with and approved by the DEA. VCU Health CE, VCU Health System, or VCU are only associated with marijuana research that meets this exception. This educational material does not constitute legal advice and does not express the views or opinions of VCU Health CE, VCU Health System, or VCU.

CBD: What You Need to Know

Aron H. Lichtman, Ph.D.

Department of Pharmacology and Toxicology



Disclosures

Scientific Advisory Board member

- Abide Therapeutics (ended June 2019)
- Sea Pharmaceuticals

Consulting

- F. Hoffmann-La Roche Ltd
- Corbus Pharmaceuticals

Learning Objectives

- a. Distinguish between proven and potential therapeutic effects of CBD.
- b. Be familiar with concerns and potential untoward effects of CBD



Many originally plant-derived medications work upon endogenous systems

Cannabis

Cannabis sativa



Willow Tree
Salix



Opium

Lachryma papaveris



Foxglove

Digitalis purpurea



Chemical constituents

Chemical classes

Cannabinoids (100+)

Nitrogenous cmpds (27)

Amino acids(18)

Proteins/ enzymes (11)

Sugars (34)

Hydrocarbons (50)

Simple alcohols (7)

Simple aldehydes (12)

Simple ketones (13)

Simple acids (21)

Fatty acids (22)

Simple esters/lactones (13)

Steroids (11)

Terpenes (20)

Non-cannabinoid phenols (25)

Flavoroids (21)

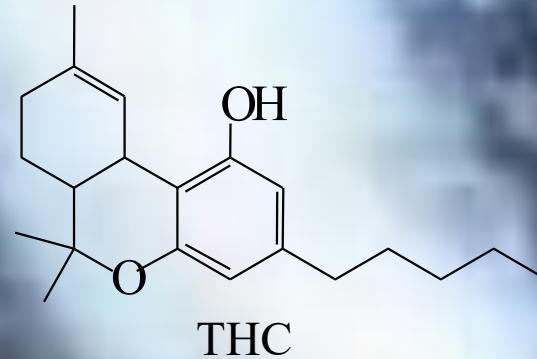
Vitamins (1)

Pigments (2)

Elements (9)

Total known compounds (483)

of cannabis



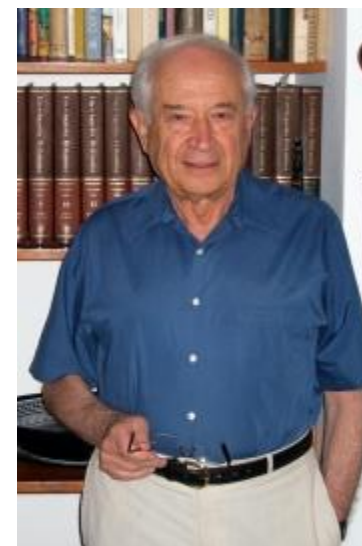
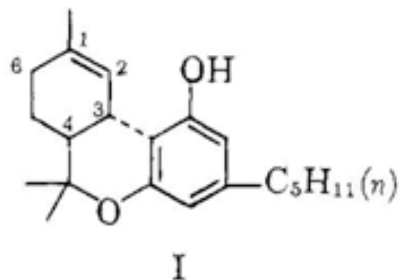
Gaoni and Mechoulam (1964)* Elucidated the Structure of THC

Isolation, Structure, and Partial Synthesis of an Active Constituent of Hashish¹

Sir:

Hashish (marihuana), the psychotomimetically active resin of the female flowering tops of *Cannabis sativa* L. is one of the most widely used illicit narcotic drugs. A number of groups have reported the isolation of active constituents.² Most of these substances are not fully characterized, and comparisons with or between them are difficult.

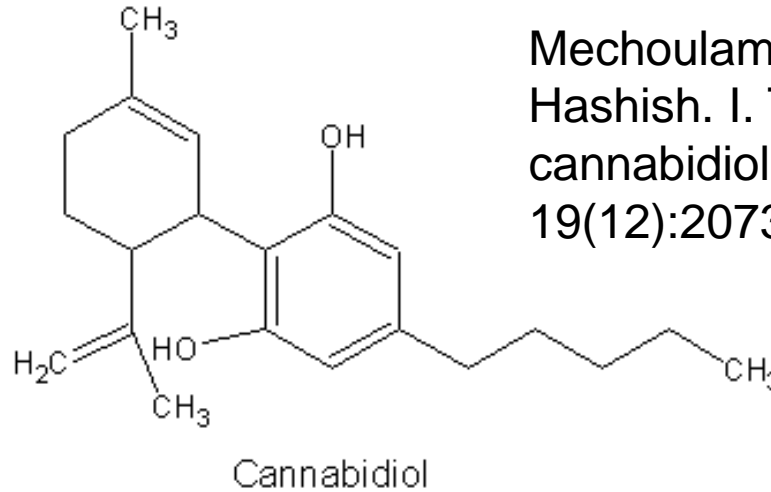
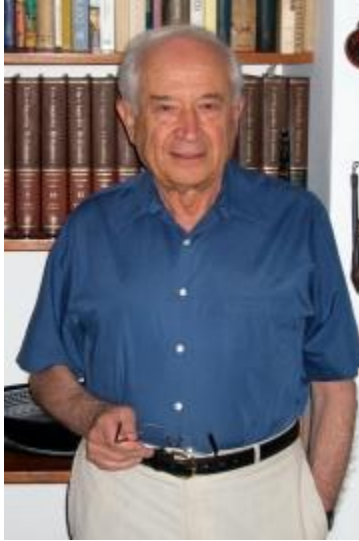
We now wish to report the isolation of an active constituent of hashish to which we assign structure I (Δ^1 -3,4-*trans*-tetrahydrocannabinol).³ This is the first active component whose constitution is fully elucidated.⁴



*Journal of the American Chemical Society, 86:1646-47

Cannabidiol (CBD)

(Does not elicit cannabis-like effects)

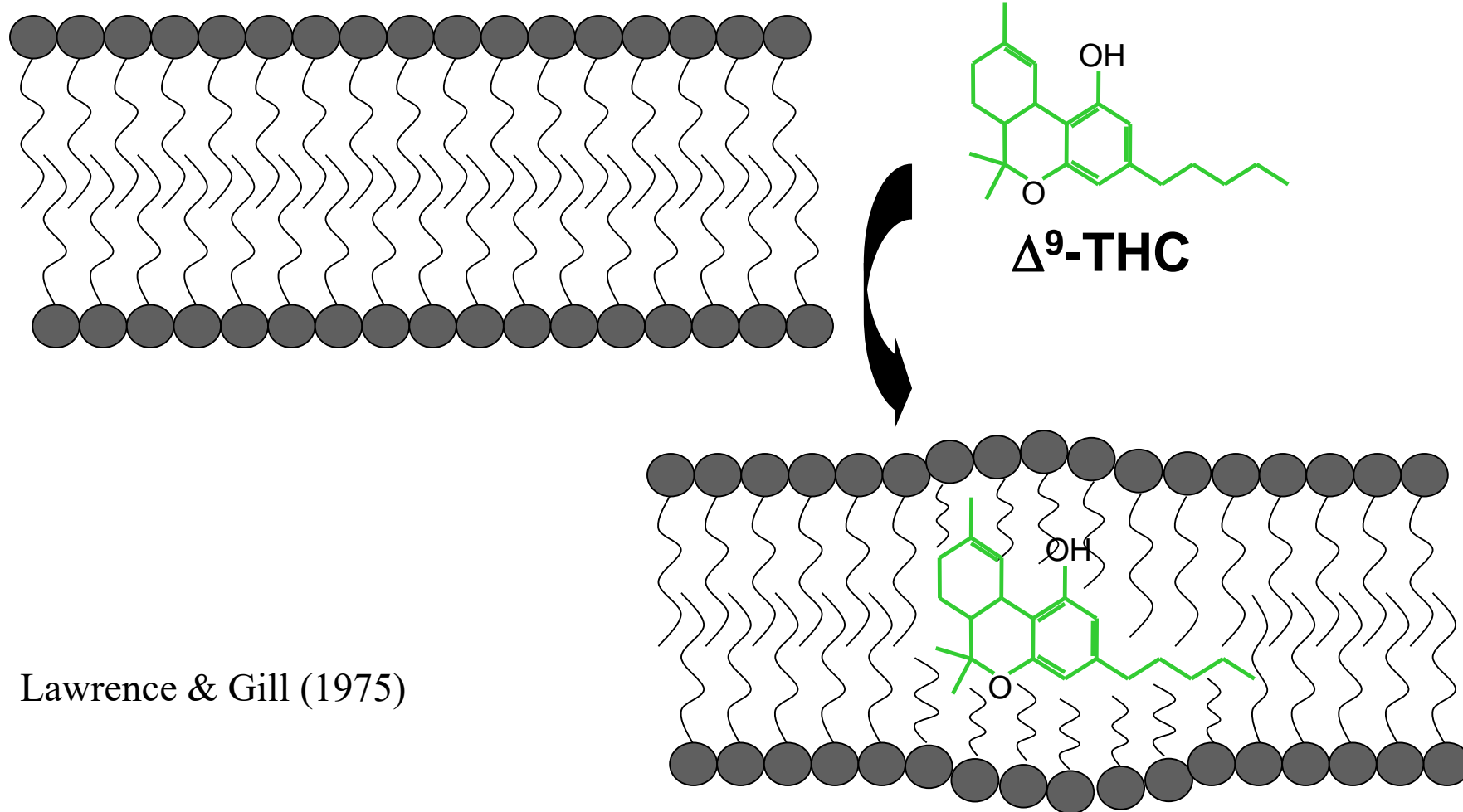


Mechoulam and Shvo (1963)
Hashish. I. The structure of
cannabidiol, Tetrahedron
19(12):2073-8.

Efficacy in Preclinical Models

- Neuropathic pain
- Rheumatoid arthritis
- Anxiety
- Epilepsy
- Cancer
- Anti-emetic/anti-nausea

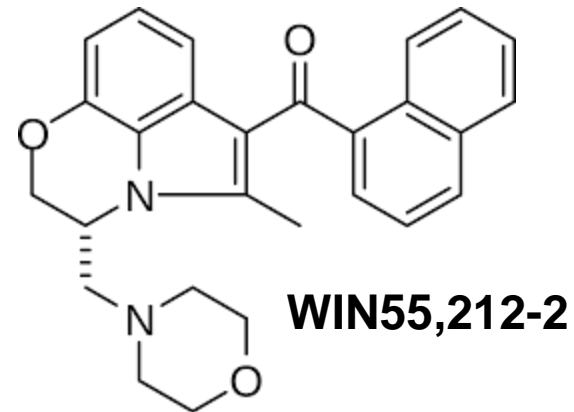
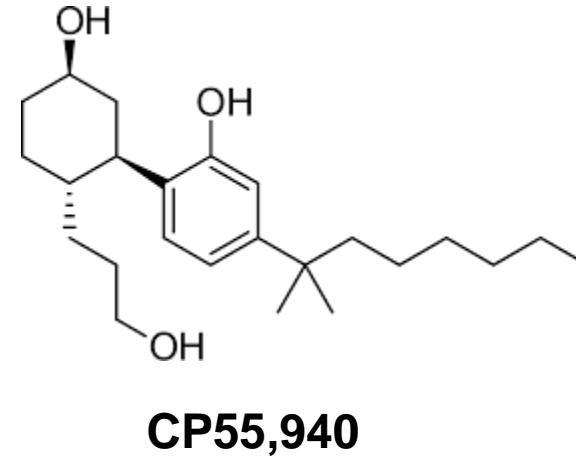
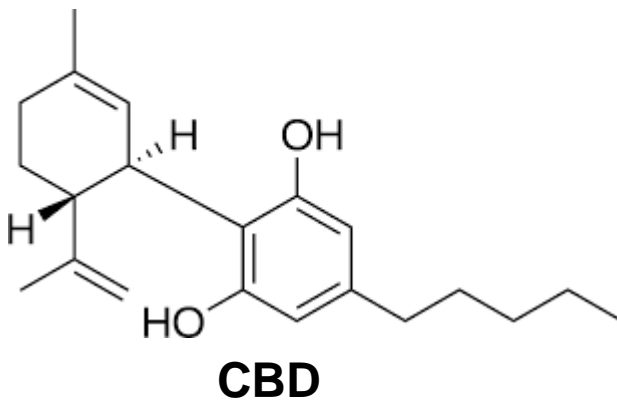
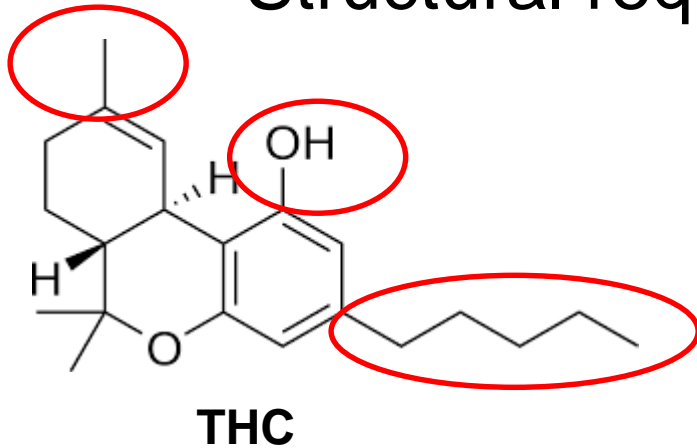
Early Hypothesis: Membrane Perturbation



Lawrence & Gill (1975)

Structure Activity Relationship

- Unique effects
- Highly potent
- Structural requirements



Specific binding site of THC in Brain Tissue

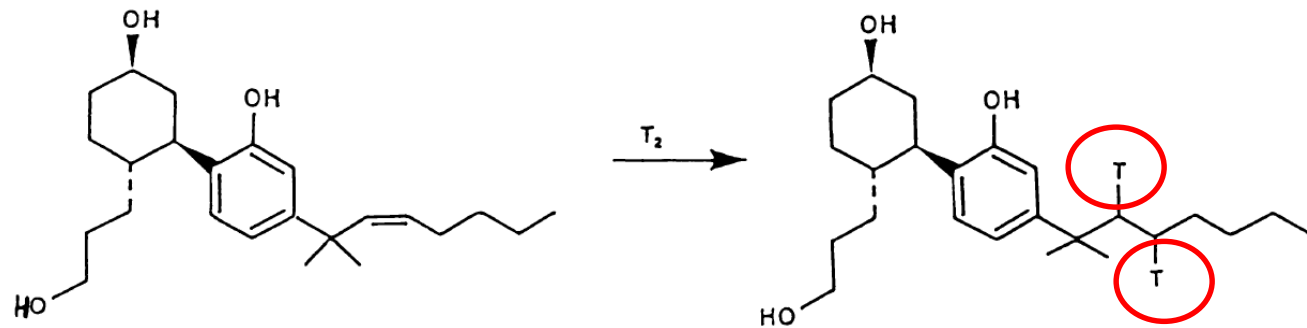
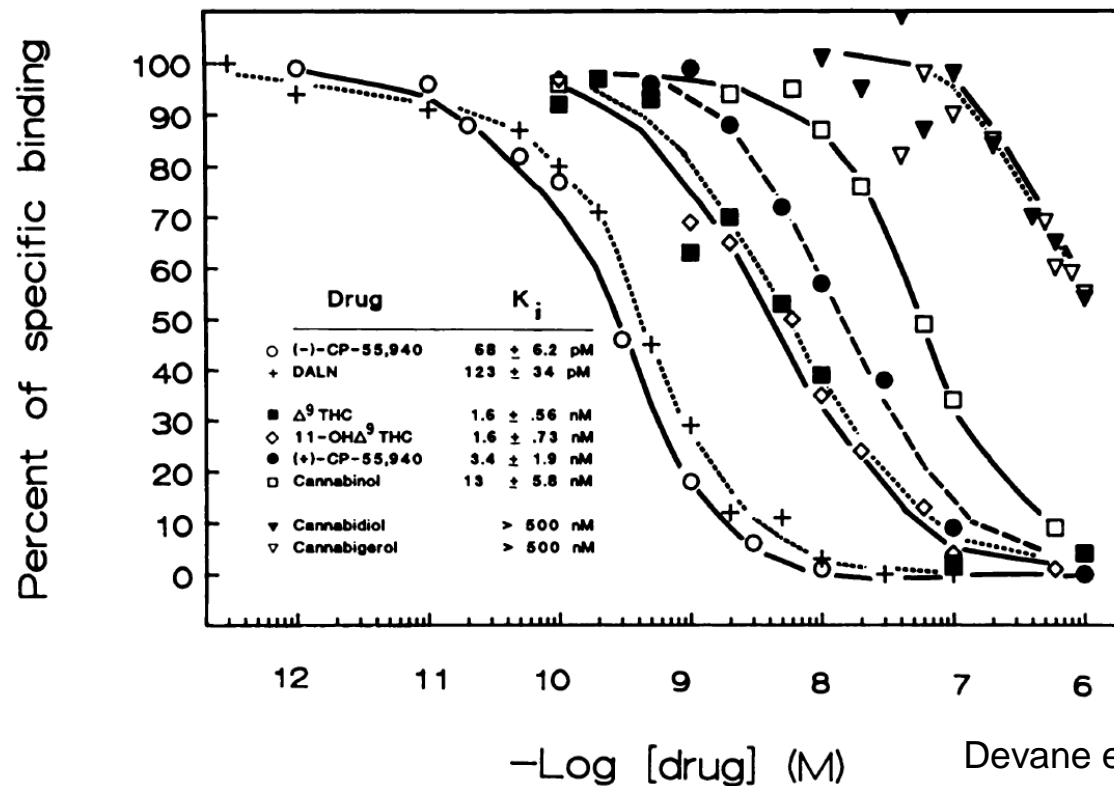
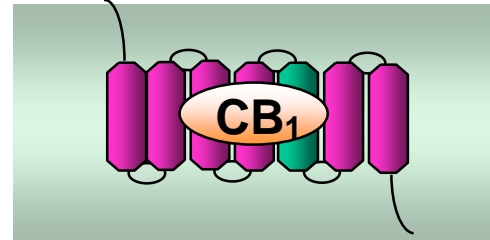


Fig. 1. The synthesis of [3H] CP-55,940 by the tritium reduction of compound 1.

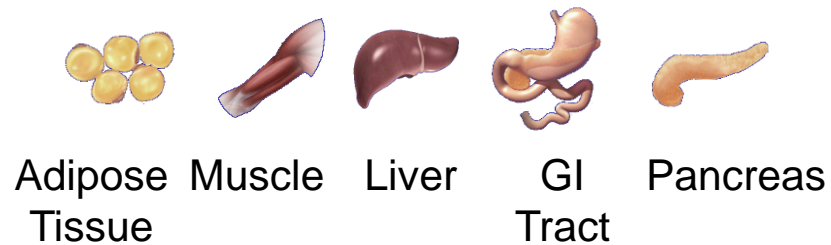
Radiolabeled CP55,940



CB₁ Receptors



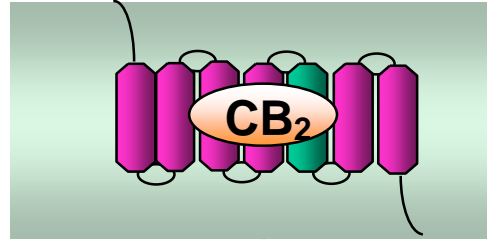
Brain



Responsible for most CNS cannabis effects
Also modulates many physiological functions

Devane et al. (1988) Mol Pharm, 34:605-613
Herkenham et al (1990) PNAS,87:1932-1936
Matsuda et al. (1990) Nature, 346: 561-4

CB₂ Receptors



Immune System

T cells B cells Monocytes
Spleen Tonsils

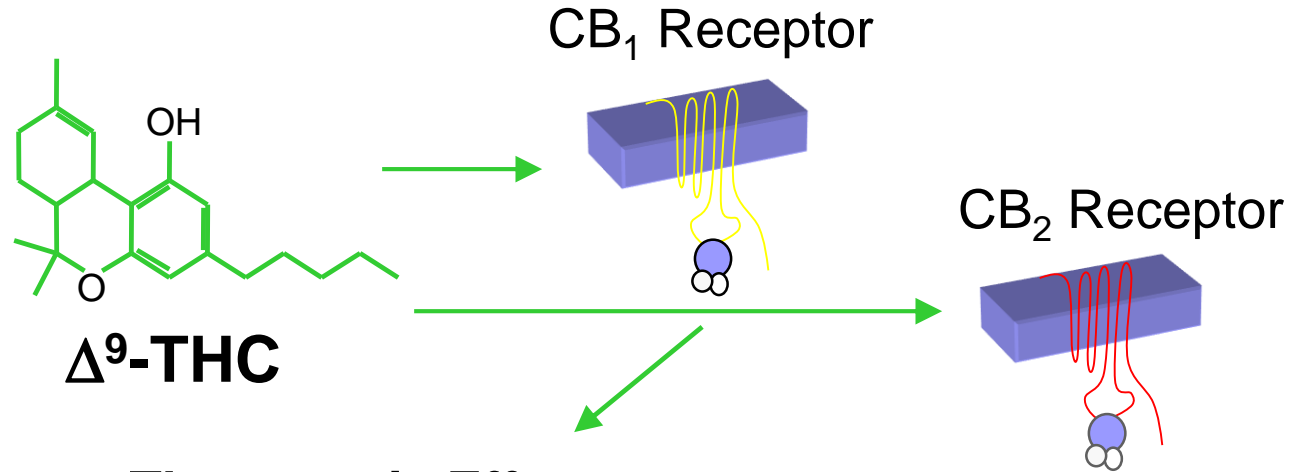
- Expressed primarily in immune cells
- Low expression in CNS, but increased upon microglial activation, neurons
- Agonists reduce nociception, inflammation, neurodegenerative states, and cocaine reward

Munro S et al. *Nature*. 1993;365:61-65.

Van Sickle MD et al. *Science*. 2005;310:329-332.

Whiteside GT et al. *Curr Med Chem*. 2007;14:917-936.

THC Produces Its Effects Through the Activation of Two Types of Cannabinoid Receptors



Therapeutic Effects

- Antiemetic/antinausea
- Appetite stimulant
- Increased energy storage
- Analgesia

Side Effects

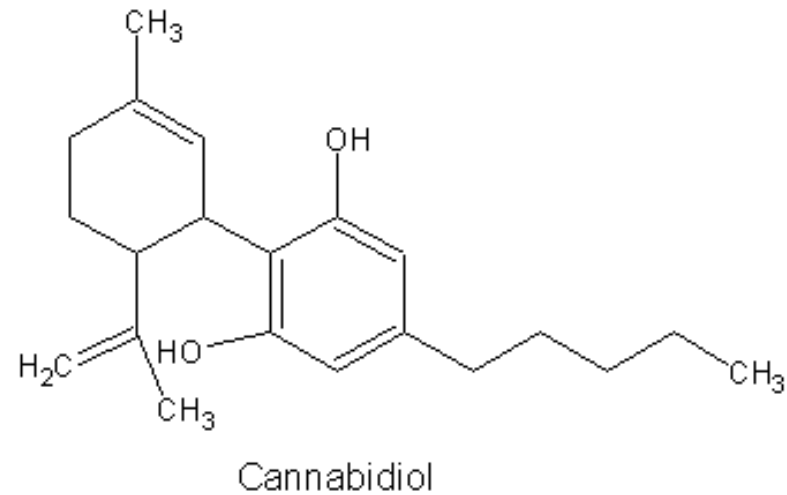
- Psychomimetic effects
- Abuse liability
- Dependence liability
- Memory impairment

Potential Therapeutic effects

- Analgesia
- Anti-inflammation
 - periphery
 - CNS (AD, ALS, etc)
- Anti-cocaine addiction

No apparent adverse side effects at the receptor

What is/are the underlying mechanism(s) of action CBD?



CBD does not activate cannabinoid receptors, but interacts with low potency at many sites

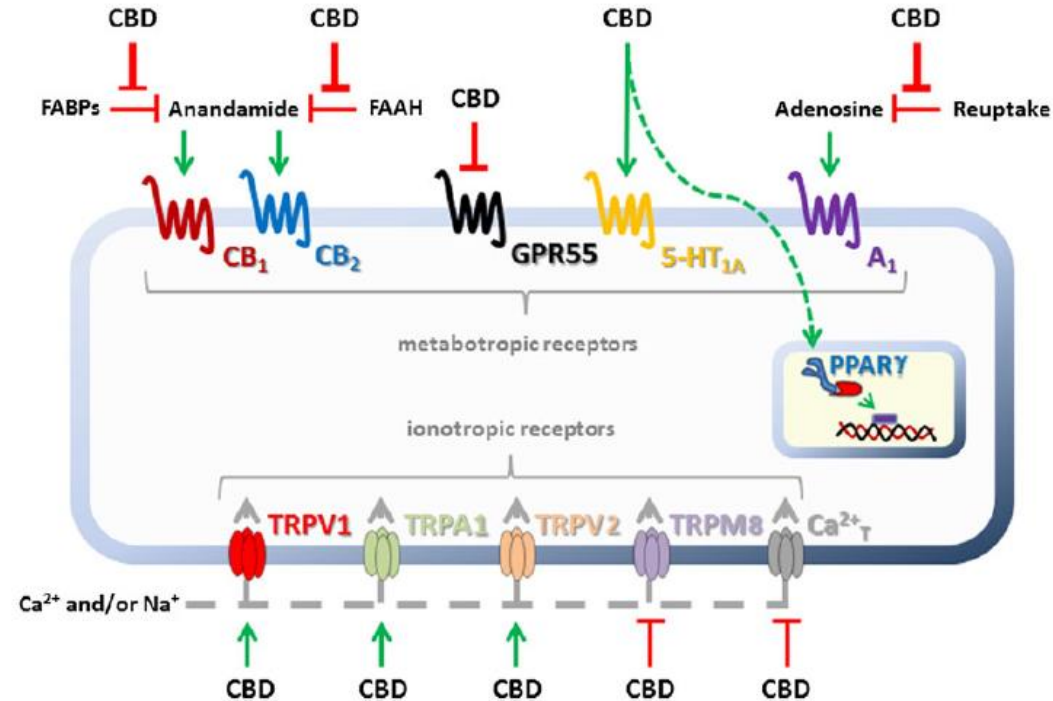


Figure 1

The main molecular targets and potential mechanisms of action of CBD. This drug inhibits both FAAH, the enzyme which metabolizes anandamide, and FABPs, which mediate the transport of anandamide to FAAH; both mechanisms ultimately result in the indirect activation of CB₁ and/or CB₂ receptors. CBD also activates the 5-HT_{1A} receptor, PPAR_γ and the transient receptor potential channels TRPV1, TRPA1 and TRPV2. Finally, CBD inhibits adenosine reuptake and antagonizes GPR55, TRPM8 and T-type Ca²⁺ channels. 5-HT_{1A} and (indirect) cannabinoid receptor activation are the mechanisms that have been implicated in the anxiolytic effects of CBD to date (see Ibeas Bih *et al.* (2015) and McPartland *et al.* (2015) for further details).

CBD: Primarily Metabolized by CYP2C19 and CYP3A4

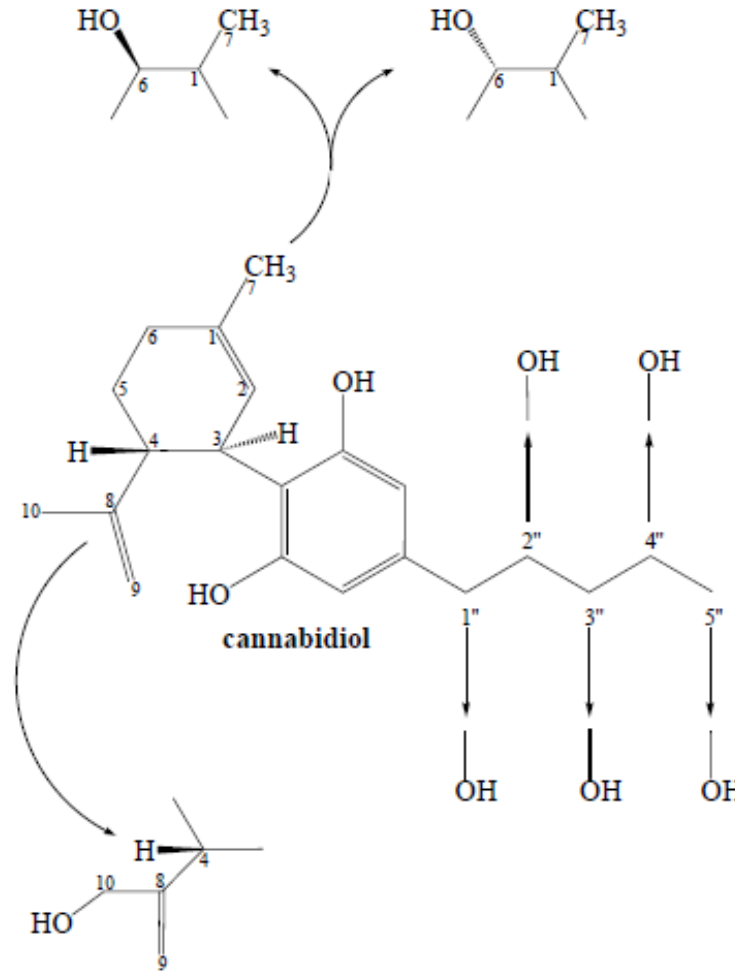


Fig. (7). Hydroxylation of CBD by CYP enzymes [72].

Four decades ago: Initial CBD clinical trial

Pharmacology 21: 175–185 (1980)

Chronic Administration of Cannabidiol to Healthy Volunteers and Epileptic Patients¹

Jomar M. Cunha, E.A. Carlini, Aparecido E. Pereira, Oswaldo L. Ramos, Camilo Pimentel, Rubens Gagliardi, W.L. Sanvito, N. Lander and R. Mechoulam

Dravet Syndrome

- Dravet syndrome (AKA severe myoclonic epilepsy of infancy or SME), a rare genetic form of epileptic encephalopathy primarily due to loss-of-function mutations in the *SCN1A* gene
- *SCN1A* provides instructions for making the alpha subunit of the NaV1.1 sodium channel
- Hundreds of mutations in the *SCN1A* gene exist and are known to cause genetic epilepsy
- These mutations affect the ability of NaV1.1 channels to transport sodium ions into neuron
- Dravet can cause more serious seizures that last longer and may be difficult to control.
- The recurrent seizures (epilepsy) can worsen over time and are often accompanied by a decline in brain function.

<https://ghr.nlm.nih.gov/gene/SCN1A>

A generation later

The NEW ENGLAND
JOURNAL *of* MEDICINE

ESTABLISHED IN 1812

MAY 25, 2017

VOL. 376 NO. 21

Trial of Cannabidiol for Drug-Resistant Seizures in the Dravet Syndrome

Orrin Devinsky, M.D., J. Helen Cross, Ph.D., F.R.C.P.C.H., Linda Laux, M.D., Eric Marsh, M.D., Ian Miller, M.D.,
Rima Nabbout, M.D., Ingrid E. Scheffer, M.B., B.S., Ph.D., Elizabeth A. Thiele, M.D., Ph.D.,
and Stephen Wright, M.D., for the Cannabidiol in Dravet Syndrome Study Group*

Primary End Point: CBD Significantly Reduces Seizures

Table 2. Primary Efficacy End Point of Percentage Change in Convulsive-Seizure Frequency in Each Trial Group.*

Variable	Cannabidiol	Placebo	Adjusted Median Difference (95% CI) <i>percentage points</i>	P Value†
No. of convulsive seizures per mo — median (range)				
Baseline	12.4 (3.9 to 1717)	14.9 (3.7 to 718)		
Treatment period	5.9 (0.0 to 2159)	14.1 (0.9 to 709)		
Percentage change in seizure frequency— median (range)	-38.9 (-100 to 337)	-13.3 (-91.5 to 230)	-22.8 (-41.1 to -5.4)	0.01

* CI denotes confidence interval.

† The P value was calculated with the use of a Wilcoxon rank-sum test with the Hodges–Lehmann approach.

Secondary End Points: CBD Significantly Reduces Seizures

Table 3. Summary of Secondary End-Point Results during the Treatment Period (Intention-to-Treat Analysis Set).*

End Point	Cannabidiol vs. Placebo		P Value [†]
	Difference (95% CI)	Odds Ratio (95% CI) [‡]	
Change from baseline in CGIC score	-1.0 (-1.0 to 0.0) [§]		0.02
Reduction in convulsive seizures from baseline [¶]			
≥25% reduction		2.10 (1.01 to 4.35)	0.05
≥50% reduction: key secondary end point		2.00 (0.93 to 4.30)	0.08
≥75% reduction		2.21 (0.82 to 5.95)	0.11
100% reduction	4.9 (-0.5 to 10.3)		0.08
Percentage change from baseline in seizure frequency**			
Total seizures	-19.20 (-39.25 to -1.17) [§]		0.03
Total nonconvulsive seizures	0.00 (-21.36 to 31.59) [§]		0.88
Reduction from baseline in duration of seizure subtypes ^{††}			
Tonic-clonic seizures		2.48 (0.94 to 6.51)	0.07
Tonic seizures		3.40 (0.52 to 22.23)	0.20
Clonic seizures		1.25 (0.15 to 10.57)	0.84
Atonic seizures		7.44 (0.27 to 204.96)	0.24
Myoclonic seizures		2.89 (0.58 to 14.47)	0.20
Countable partial seizures		6.01 (0.83 to 43.21)	0.08
Other partial seizures		1.00 (<0.01 to >999.99)	1.00
Absence seizures		0.61 (0.14 to 2.62)	0.50
Change from baseline in other variables ^{‡‡}			
Sleep-disruption score	-0.4 (-1.5 to 0.7)		0.45
Epworth Sleepiness Scale score	1.5 (-0.2 to 3.2)		0.08
Quality of Life in Childhood Epilepsy score	1.5 (-3.8 to 6.8)		0.58
Vineland-II score	-2.6 (-6.8 to 1.6)		0.21
Inpatient hospitalizations due to epilepsy	0.0 (0.0 to 0.1)		0.54

Adverse Events Associated with CBD

- 93% CBD
 - 84% Mild/moderate
 - 75% related to treatment
 - 16% serious
 - 8 withdrew due to side effects
 - 12 Elevated aminotransferase levels (in patients taking valproic acid)
- 75% Placebo
 - 95% Mild/moderate
 - 36% related to treatment
 - 5% serious
 - 1 withdrew due to side effects
 - 1 Elevated aminotransferase levels

Table 4. Adverse Events Occurring with a Frequency of Greater Than 10% in Either Trial Group, According to System Organ Class and Preferred Term.*

System Organ Class and Preferred Term	Cannabidiol (N=61)	Placebo (N=59)
	<i>no. of patients (%)</i>	
Gastrointestinal		
Diarrhea	19 (31)	6 (10)
Vomiting	9 (15)	3 (5)
General		
Fatigue	12 (20)	2 (3)
Pyrexia	9 (15)	5 (8)
Infections: upper respiratory tract infection	7 (11)	5 (8)
Metabolism: decreased appetite	17 (28)	3 (5)
Nervous system		
Convulsion	7 (11)	3 (5)
Lethargy	8 (13)	3 (5)
Somnolence	22 (36)	6 (10)

Summary/Conclusions

- CBD significant reduction in convulsive-seizure frequency compared with placebo in children and young adults with drug-resistant Dravet syndrome, who were taking other anticonvulsants.
- Significant effect of global impression of change indicates clinical relevance
- CBD side effects: somnolence, loss of appetite, diarrhea

Concerns/Other Considerations

- Drug interactions: CBD metabolized by CYP3A4 and CYP2C19
- Patients obtaining CBD from non-FDA approved sources (e.g., dispensaries, commercially available from Hemp, internet, etc.)
 - Lack of standardized dosing
 - Inaccurate labeling
 - Presence of other chemicals

Potential Therapeutic Indications Cannabinoid-based Drugs

- ✓ Cancer chemotherapy-induced nausea & emesis*
- ✓ Appetite increase in AIDS* and cancer patients
- Metabolic syndrome & weight loss (antagonists)
- Fluid regulation
- Pain and Inflammation
 - Rheumatoid arthritis
 - Spinal/Neuropathic
 - Cancer/chemotherapy
 - Migraine
 - NSAID-induced ulcers
- Pruritus (itching)
- Palliative (quality of life)
- Drug abuse disorders (e.g., cannabis, nicotine, opioids, cocaine, alcohol)
- Psychiatric diseases
 - Anxiety disorders
 - Posttraumatic Stress Disorder
 - Depression
- Brain Injury (e.g., stroke, trauma)
- ✓ Epilepsy*
- Neurodegenerative diseases
 - Spasticity/multiple sclerosis
 - Huntington's disease
 - Parkinson's disease
 - Alzheimer's disease
 - Amyotrophic lateral sclerosis
- Cancer

*FDA approved cannabinoid-based medications

Acknowledgements



Professor Billy R. Martin (1943-2008)



National Institute
on Drug Abuse

The Science of Drug Abuse & Addiction



Any Questions?

Case Presentation

Dr. Diane Boyer; Region Ten

Case Presentation

DEMOGRAPHIC INFORMATION

- 54 yo male, Caucasian, post-high school
- Carpentry work with father
- With mother and father and two children

- Patient's parents are reliable and supportive

BACKGROUND INFORMATION

- Non small cell cancer of spinal cord with brain mets, opioid use disorder
- Suboxone, Morphine Amitriptyline, has completed Gamma knife and radiation interventions
- Is again able to complete ADLs and is working some in carpentry
- Was being seen monthly in OBOT before diagnosis and receiving therapy monthly

Case Presentation

INTERVENTIONS

- No relapse in over a year while dealing with severe chronic pain for last 5 months without diagnosis. MRI during pain management eval revealed cancer

OTHER RELEVANT INFORMATION

- Pain is being well controlled after addition of Morphine to Suboxone

PLAN FOR TREATMENT

Working closely with Palliative Care MD

(my role opioid use disorder treatment; PC role pain management)

Patient's goal: to live as long as he can and be as highly functioning as possible; enjoys working, wants to be around for children (pre-teenagers) as long as possible

Case Presentation

- Patient in Suboxone treatment for opioid use disorder
- Long history of opioid use disorder; past history of methadone treatment and Suboxone treatment
- Currently being treated for Cancer-related pain
- Prescribing MD wanted to continue Suboxone and had added Morphine.

- Looking for additional information on how to best treat opioid use disorder and cancer-related pain.

Mary Ann Liebert, Inc.  publishers
High-Impact Articles



Journal of Palliative Medicine

FREE ACCESS through August 20, 2019.

Read Now:

**Managing Opioid Use Disorder in the Setting of a Terminal Disease:
Opportunities and Challenges**

Zachary S. Sager, Mary K. Buss, Kevin P. Hill, Jane A. Driver, and Lara M. Skarf

[Read Now](#)



Screening for Opioid Misuse in the Nonhospitalized Seriously Ill Patient

Julie L. Mitchell, Leslie J. Blackhall, and Joshua S. Barclay [Read Now](#)

Opioid Screening Practices in the Cancer Pain Patient

Dustin Liebling, Neel Mehta, and Amitabh Gulati [Read Now](#)

**Craving Behavior from Opioid Addiction Controlled with Olanzapine in an Advanced Cancer
Patient: A Case Report**

Se-Il Go, Haa-Na Song, So-Jin Lee, Eduardo Bruera, and Jung Hun Kang [Read Now](#)

[Open Access]

**Measurement of Chronic Pain and Opioid Use Evaluation in Community-Based Persons with
Serious Illnesses**

Kathleen Puntillo and Ramana K. Naidu [Read Now](#)

READ MORE FROM THE JOURNAL

Accessing CME and CEU Credits



Claim CME / CEU at www.vcuhealth.org/pcecho



VCU Health Palliative Care ECHO



Our VCU Health Palliative Care ECHO program partners with community practices caring for patients with serious illness and applies our interdisciplinary care team - a mix of physicians, nurses, social workers, psychologists, chaplains and more - to provide patient care support and education throughout Virginia.

We have a long-standing palliative care program with an inpatient unit, consult service and supportive care clinic to provide serious illness care. Many communities in Virginia do not have access to palliative care and we're here to help.

- [View Palliative Care ECHO sessions](#) (CME/CEU available).
- [Register now for an upcoming clinic.](#)
- [Submit a case study](#) (registered participants only).
- Live Session Participants: [Claim CME/CEU](#).

[Contact us](#) for more information or help with any questions about our program.

About Palliative Care

Telehealth

About Telehealth at VCU Health ▾

For Patients ▾

For Providers ▲

Virginia Opioid Addiction ECHO ▾

VCU Health Palliative Care ECHO ▲

Curriculum

Register Now!

Submit Your Case Study

Virginia Sickle Cell Disease ECHO ▾

Telehealth Programs ▾



Submit your evaluation to claim your CME

VCU Health Palliative Care ECHO Survey Resize font: + | -

Please complete the survey below.

Thank you!

Name <small>* must provide value</small>	<input type="text"/>
Credentials (MD, DO, NP, RN, ...) <small>* must provide value</small>	<input type="text"/>
Email Address <small>* must provide value</small>	<input type="text"/>
I attest that I have successfully attended the Virginia Palliative Care ECHO Clinic. <small>* must provide value</small>	<input type="radio"/> Yes <input type="radio"/> No

[reset](#)



View recorded sessions at www.vcuhealth.org/pcecho



VCU Health Palliative Care ECHO



Our VCU Health Palliative Care ECHO program partners with community practices caring for patients with serious illness and applies our interdisciplinary care team - a mix of physicians, nurses, social workers, psychologists, chaplains and more - to provide patient care support and education throughout Virginia.

We have a long-standing palliative care program with an inpatient unit, consult service and supportive care clinic to provide serious illness care. Many communities in Virginia do not have access to palliative care and we're here to help.

- [View Palliative Care ECHO sessions](#) (CME/CEU available).
- [Register now for an upcoming clinic.](#)
- [Submit a case study](#) (registered participants only).
- Live Session Participants: [Claim CME/CEU.](#)

[Contact us](#) for more information or help with any questions about our program.

About Palliative Care

Telehealth

About Telehealth at VCU Health ▾

For Patients ▾

For Providers ▲

Virginia Opioid Addiction ECHO ▾

VCU Health Palliative Care ECHO ▲

Curriculum

Register Now!

Submit Your Case Study

Virginia Sickle Cell Disease ECHO ▾

Telehealth Programs ▾





Curriculum



[Register now](#) for an upcoming clinic on palliative care.



Upcoming Clinics

Mindfulness and Provider Self Care +

June 13, 2019

Previous Clinics

Introduction to Palliative and Supportive Care -

Feb. 14, 2019

[View session for CME](#)

Presented by Danielle Noreika, MD

Learning Objectives:

- Define palliative care and differentiate from hospice.
- Describe reasons for referral to palliative care.
- Describe basic structure of palliative care team.

Telehealth

About Telehealth at VCU Health v

For Patients v

For Providers ^

Virginia Opioid Addiction ECHO v

VCU Health Palliative Care ECHO ^

Curriculum

Register Now!

Submit Your Case Study

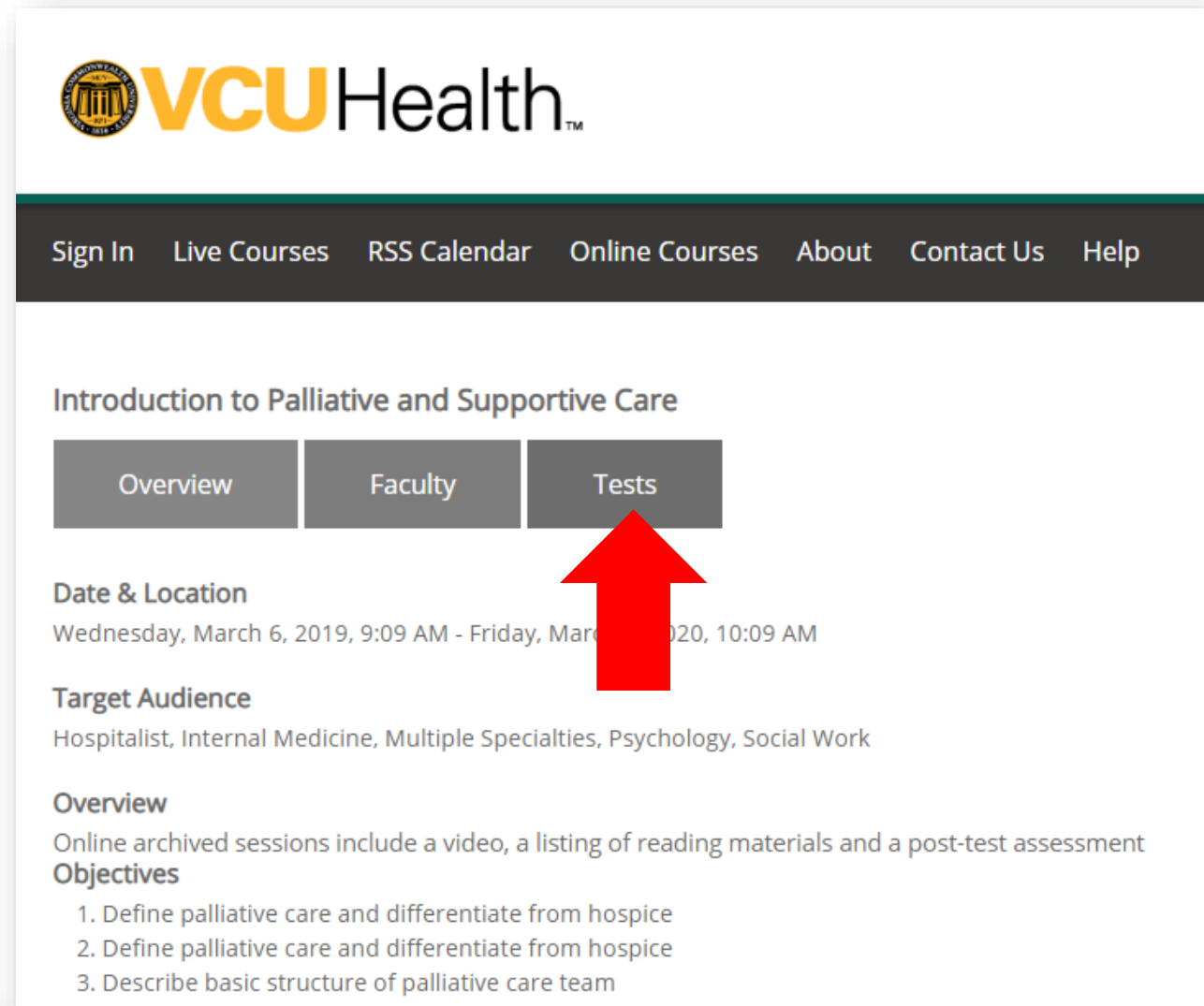
Virginia Sickle Cell Disease ECHO v


Telehealth Programs v



View previously recorded ECHOs for CME

Click “Tests” to view video of the session and take a short quiz for continuing education credit



 **VCU Health**[™]

[Sign In](#) [Live Courses](#) [RSS Calendar](#) [Online Courses](#) [About](#) [Contact Us](#) [Help](#)

Introduction to Palliative and Supportive Care

[Overview](#) [Faculty](#) [Tests](#)

Date & Location
Wednesday, March 6, 2019, 9:09 AM - Friday, March 15, 2020, 10:09 AM

Target Audience
Hospitalist, Internal Medicine, Multiple Specialties, Psychology, Social Work

Overview
Online archived sessions include a video, a listing of reading materials and a post-test assessment

Objectives

1. Define palliative care and differentiate from hospice
2. Define palliative care and differentiate from hospice
3. Describe basic structure of palliative care team

View your CME/CEU transcript

- Go to vcu.cloud-cme.com and click “My CE”
- Log in with the email you used to register for our ECHO session









- Courses >
- Application >
- My CE >**
- Claim MOC Credit >
- Online Disclosure Form >



My CE

Instructions: Click a button to proceed.

 Profile	 Transcript	 Evaluations & Certificates	 Registrations & Receipts	 Tests	 Syllabus
--	---	---	---	--	---

View your CME/CEU transcript

If you have never logged in before, you may be prompted to enter more information before you can view your transcript



[Logout](#) [Attendee Portal](#)

 print

Please complete the information below. Required fields are noted with a red asterisk. Scroll down and click Submit. If you are new to this system, you will need to login with your email address and the password you created below.

[Reset My Password](#)

I am eligible for the following credit categories

- AMA PRA Category 1 Credits™
- AAFP - American Academy of Family Physicians
- ACPE - Accreditation Council for Pharmacy Education
- ANCC - American Nurses Credentialing Center (contact hours)
- ADA CERP - American Dental Association Continuing Education Recognition Program
- ABA MOCA 2.0 Part 2
- American Psychological Association
- Non-Physician Attendance
- AAP - American Academy of Pediatrics
- ABIM - American Board of Internal Medicine MOC Part II
- ASET - The Neurodiagnostic Society ACE
- ABP - American Board of Pediatrics MOC Part II
- General Attendance
- ABIM MOC Part 2
- ABPN MOC Part 2

Basic Information

Employee Category

- I am an employed member of VCU Health Staff.
- I am a community member of VCU Health Staff.
- I am NOT a member of VCU Health Staff.

Salutation First MI Last Suffix



THANK YOU!

We hope to see you at our next ECHO

